



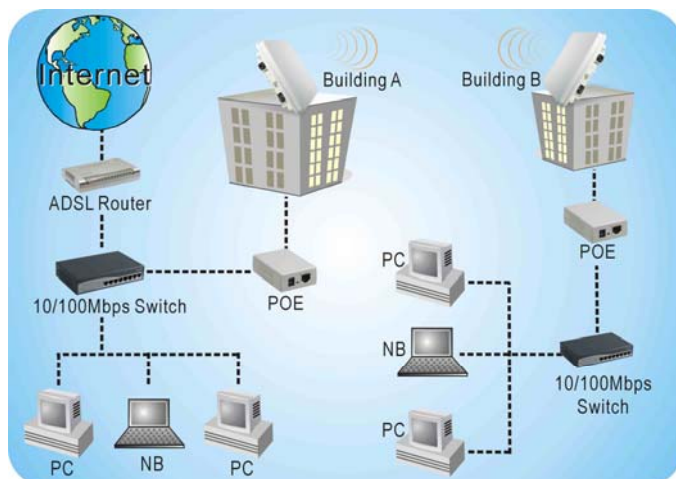
CPE-2018G

IEEE802.11g Wireless Outdoor Bridge(200mW), 18dBi Panel-Antenna
Integrated EIRP=41dBm

PheeNet CPE-2018G is an IEEE 802.11g EIRP41dBm Panel Antenna Integrated Outdoor Bridge. Not only WEP Security, it also has advanced WPA, WPA2, IEEE802.1x, Disable SSID Broadcast, MAC Address filtering to ensure the security of Wireless LAN.

Moreover, the CPE-2018G can be set as AP, Bridge, Client, Repeater, and compatibilities of Win 98, Win2000, WinME, and Win XP operation systems provide more flexibility and mobility to users. For ISP/WISP, Telecom, or SMB/Enterprise, it is no doubt that CPE-2018G is an ideal device to build a wireless LAN network

Application



Features

1. 18dBi Panel Antenna Integrated CPE solution
2. Waterproof Outdoor Housing
3. Compatible with IEEE802.11g 54Mbps, IEEE802.11b 11Mbps, IEEE802.3u
4. Ethernet interface with 10/100BASE-TX
5. Supports wireless data encryption with 64/128-bit WEP, WPA, WPA2, IEEE802.1x
6. Supports Operation modes: Client, AP, Repeater, P2P, PMP

7. PPPoE Pass through supported
8. Support TPC, Signal Strength
9. Web configuration, management, and firmware upgrade
10. POE Built -in

Specification

Industrial Standard	
Standard	IEEE 802.11g IEEE 802.11b IEEE 802.11 IEEE 802.3u 100Base-TX Fast Ethernet ANSI/IEEE 802.3 N-way Auto-Negotiation IEEE 802.11d IEEE 802.11h
Interface	10/100Base-TX (RJ-45) x 1 W/ POE function
Security	- 802.1x, WEP,WPA TKIP, WPA2 AES/Mixed mode for PSK and TLS(Radius) -WDS supported with WEP,TKIP and AES encryption - Wireless access control by MAC address (deny or accept)
RF	
Frequency Band	2.412~2.472 GHz ISM band
Signal Type	802.11g: OFDM 802.11b: DSSS
Modulation	802.11g: OFDM (64QAM, 16QAM, QPSK, BPSK) 802.11b : DSSS(CCK, DQPSK,DBPSK)
Sensitivity	802.11b 1Mbps: -91dBm, 2Mbps: -90dBm, 5.5Mbps:-89dBm, 11Mbps:-87dBm 802.11g 6Mbps:-84dBm, 9Mbps:-82dBm, 12Mbps:-79dBm, 18Mbps:-77dBm, 24Mbps:-75dBm, 36Mbps:-73dBm, 48Mbps:-70dBm, 54Mbps:-68dBm
Output Power	EIRP=41dBm
Transmit Power Control	100%, 50%, 25%, 10%, 5%
Channel	By Country (IEEE802.11d)
Operating Mode	AP Mode : 802.11b/g Access Point(AP) Repeater Mode: WDS Repeater , Universal Repeater Bridging Mode : P2P, PTMP, Client Mode : Ad-Hoc and infrastructure mode Support Radius client used in client mode Support site survey scan and manual connect Support MAC Clone
Management	Web configuration, Signal Strength
Hardware	
Antenna	Type: Panel Direction

	Polarization: Linear, Horizontal / Vertical Gain: 18dBi VSWR: 2.0:1 Beam width: H-plane 35°, E-plane 18° Impedance: 50Ω
Environment	Operating Temperature:0~50°C Storage Temperature:0~70°C Humidity: 5%~95%(non condensing)
Power Supply	IP66 waterproof
LED Indicators	Power over Ethernet
Dimensions	415 (L) x 355 (W) x 60 (H) mm

PheeNet Technology Corp.

Rm. 3, 20F, NO. 79, Hsin Tai Wu Rd., Sec. 1,
Hsi-Chih, Taipei, Taiwan
<http://www.pheenet.com>
TEL:886-2-26982011 FAX:886-2-26981421

